

American Airlines, Allegiant, Delta, NWA, and United. These airlines offer direct flights to 12 cities throughout the US.

St Louis	Chicago	Detroit	Minneapolis
Denver	Las Vegas	Phoenix	Dallas
Memphis	Atlanta	Tampa	Orlando

Although the Lake area is still over two hours from the Springfield-Branson Regional Airport, it is still the most convenient commercial airport for visitors to use when traveling from anywhere across the United States due to the airlines and locations they can travel through.

The Lake Area has an emergency airlift from the hospital to Jefferson City.

**Figure A-26 Air Travel Examples**



**Helicopter at Hospital**

**Plane at Grand Glaize Airport**

### **NON-MOTORIST (TRAILS, SIDEWALKS)**

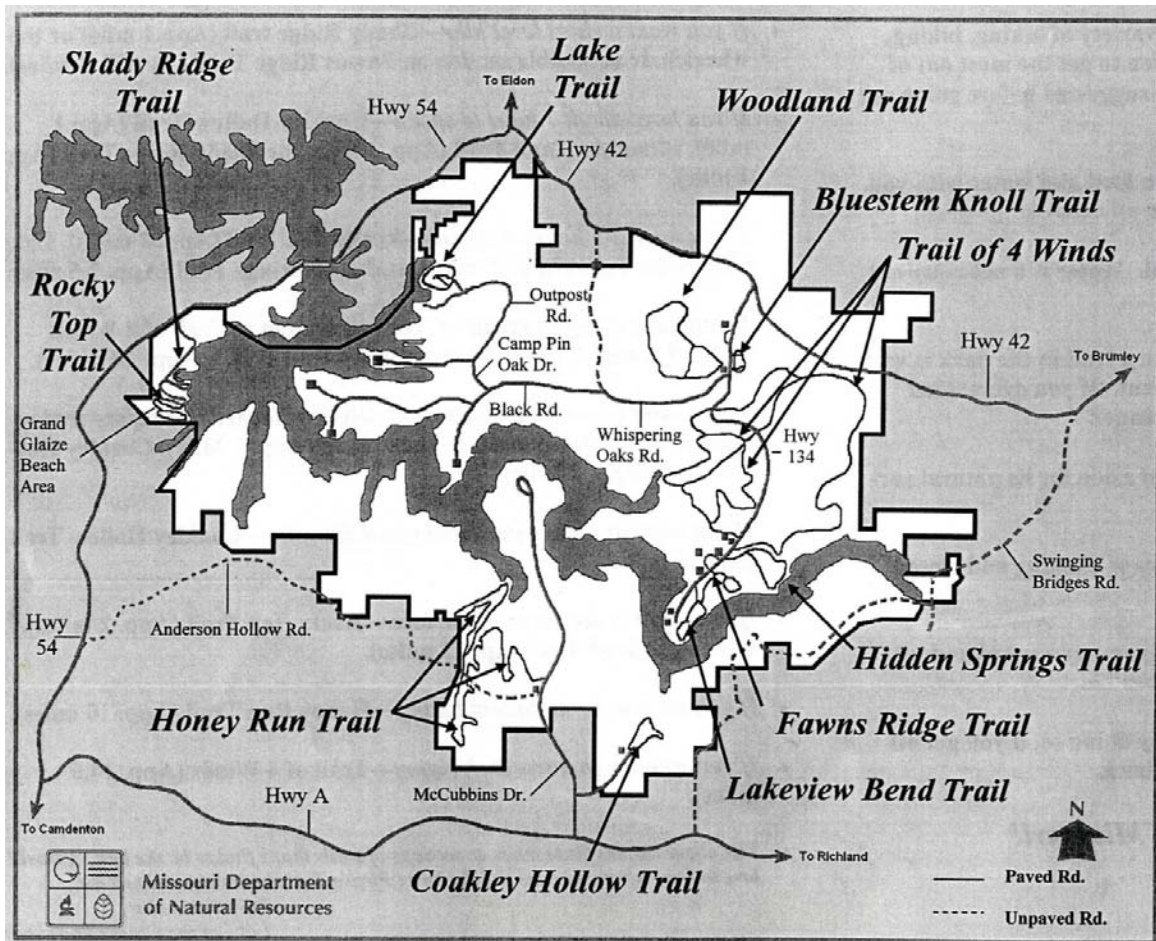
There is a wide range of bicycle and pedestrian facilities throughout the Lake Area. We have classified these facilities into four “tiers” for discussion in this plan.

- Tier 1-Modern facilities
- Tier 2-Non-ADA compliant facilities
- Tier 3-Ad Hoc facilities
- Tier 4-Informal facilities

#### **Tier I- Modern Facilities**

There are currently two “official” trail areas for biking or hiking in the lake area. The Horseshoe Bend Trail is an unmarked trail near Lodge of Four Seasons. The Lake of the Ozarks State Park has over 10 trails in its boundaries. The trails offer a wide variety of hiking, biking, boating, and horseback options. The trails range from 0.5 miles to almost 15 miles. Only some of the trails are in the county boundaries, but all are located off of Route A, MO-42, MO-134, and US-54, as shown in Figure A-27.

Figure A-27 Lake of the Ozarks State Park Trails Map



Modern pedestrian facilities currently in use within the Lake Area are found mostly in the city limits or in private developments. These facilities are paved and most have ADA-compliment ramps.

**Figure A-28 Pedestrian Environment**



**Sidewalks Along US-54 in Camdenton**

**Pedestrian Crossing in Camdenton**

**Tier 2- Non-ADA Compliant Facilities**

Outdated pedestrian facilities are found throughout the Lake Area. These facilities are paved sidewalks but have ADA issues. Most of these facilities were built years ago before the current standards for disabled persons were established.

**Figure A-29: Sidewalks Ending in Steps**



### Tier 3-Ad Hoc Facilities

Many “ad-hoc” bicycle and pedestrian facilities are found throughout the Lake Area. For example, the paved shoulders along US-54 are being used as sidewalks, even though these facilities clearly do not meet ADA standards. Also, pedestrian crossing warning signs have been emplaced on US-54 near Camdenton as a result of past safety issues. However, this crossing clearly does not provide for safe pedestrian crossings.

**Figure A-30: Examples of ‘Ad-Hoc’ Bicycle and Pedestrian Facilities**



### Tier 4- Informal Facilities

The lack of proper bicycle and pedestrian facilities has resulted in a rash of “informal” facilities being created by the users themselves. A clear example of this are the “goat-paths” found throughout the area.

### Planned Sidewalk Updates

The City of Camdenton is working with MoDOT on some sidewalk updates along MO-5 in the downtown area. They are working through a federal enhancement grant program to improve pedestrian accommodations on the west side of MO-5 between Benne Boulevard and Ha Ha Tonka Cut Thru (will tie in with the sidewalks in front of the courthouse) and on the east side of MO-5 between Kansas Street and Laker Drive (will tie in with a connection to the school). The City also commented that many residents have expressed some type of concern or suggestion for a future sidewalk between the square, also known as State US-54 and MO-5, and the Walmart located about 1.5 miles north along US-54 just south of Route V. Apparently there is a desire for a lot of pedestrian traffic along this section of highway and sidewalks or a multi-use trail would prove to be beneficial.



**Figure A-31: Informal “Goat Path”**

## WATER BOAT DOCKS, MARINAS, AND SCENIC TRAILS

Camden County has a unique transportation feature because of the Lake. The Lake causes connectivity problems for roadways, but offers much in terms of water amenities and transportation. There are many public facilities that drive the tourism industry along the water, shown on Exhibit 4. There are approximately 8 public boat docks in the Lake Area. These public boat docks are open to all users, although some do have small usage fees and gas docks. There are many marinas in the area, most all of them have water access where boats can pull right up to the restaurant. Most of the large resorts in the area have these ‘water restaurants’ or marinas to attract tourism. Exhibit 5 shows approximately 39 of the area marinas. The marinas shown are the ones found on [www.funlakelife.com](http://www.funlakelife.com)<sup>25</sup>, in the Lake of the Ozarks 2008 Vacation Guide, and from the county’s GIS files. In essence, the Lake becomes the ‘Main Street’ in the summer months for Camden County.

The Lake offers a unique type of trail to the area, a scenic aquatic trail. This trail is administered by the Missouri Department of Natural Resources as part of the Lake of the Ozarks State Park. This trail is nine miles long and runs from the Lake’s east end northwest to the Grand Glaize Beach. A map is available at the park office. There are 14 stops along the trail, each marked with an orange and white buoy, listed in Figure A-33<sup>26</sup>.



**Figure A-32: Horny Toad Marina**

<sup>25</sup> [http://www.funlakelife.com/business/directory\\_listing.php?cvb\\_cat=1&id=152&type=marine](http://www.funlakelife.com/business/directory_listing.php?cvb_cat=1&id=152&type=marine)

<sup>26</sup> [http://www.funlake.com/marine/aquatic\\_trail.php](http://www.funlake.com/marine/aquatic_trail.php)